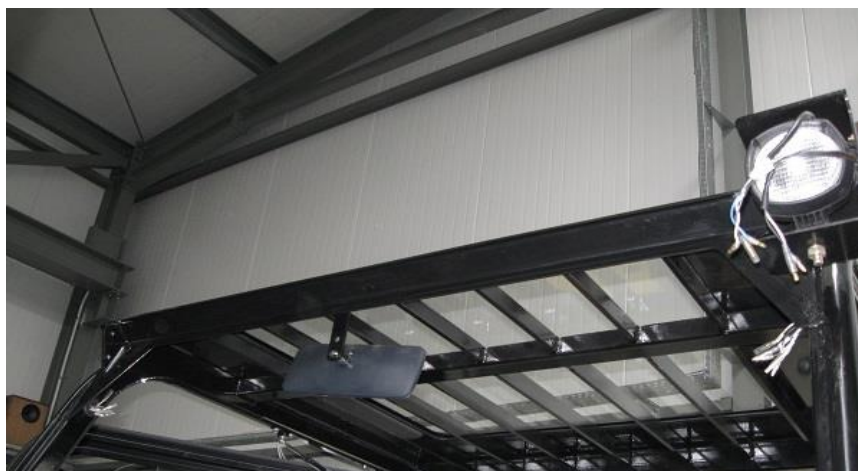


ASSEMBLY INSTRUCTION OF CABIN OF FORKLIFT Hyundai 70DS -7 E

Front

1. Put and set upper front sheet to the OHG in such way that the sheet is coplanar with cavity in front OHG profiles. After setting the roof drill holes in the front upper sheet and screw it with the roof using M6x25 screws. Seal edges with silicone.



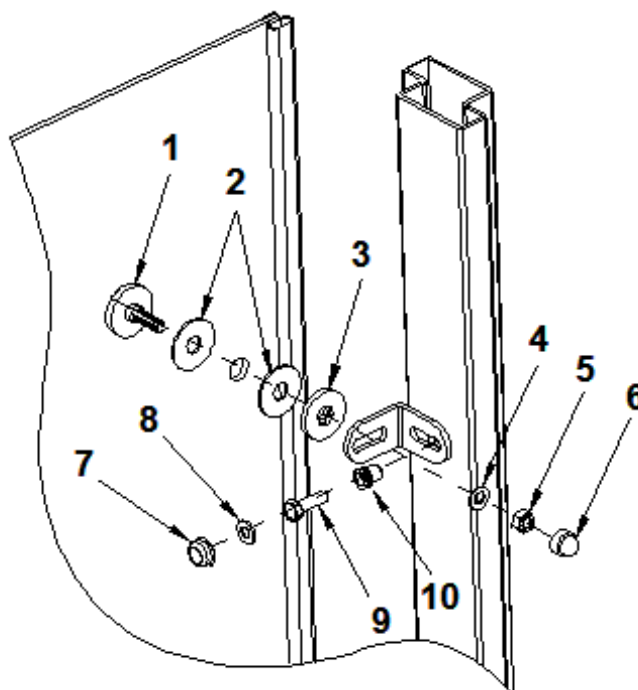


2. Put and set front glass/pane along with assembly holders (2) to the OHG in such way that it covers evenly upper and lower front sheets. Mark places for assembly holes for holders (1) and (2). Drill $\varnothing 11$ holes in that places and set M8 blind rivet nuts. Screw the glass/pane using M8x25 screws.



Complete assembly set for front glass/pane:

- 1) – M8x25 screw
- 2) – rubber pad
- 3) – spacer
- 4) – $\varnothing 8$ pad
- 5) – self-locking nut M8
- 6) – hex cap SW13
- 7) – round cap SW13
- 8) – $\varnothing 8$ pad
- 9) – M8x25 screw
- 10) – blind rivet nut M8



Rear panel

1. Demount air filter. Screw rear angle bar (1) in such way that it was coplanar with outer part of rear profiles. Screw rear bar (2) using self-drilling screws Ø6,3x25.



2. Screw rear vertical sheet (3) and rear lower sheet (4) using self-drilling screws Ø6,3x25.

3. Install the previously removed filter (5) to the air intake pipe. Screw the rear window.





Roof

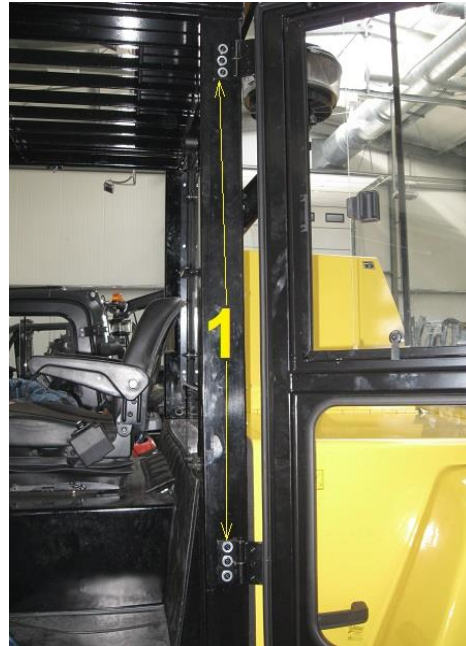
1. Stick the self-adhesive gasket on top of the truck roof frame profiles. Place the roof to the top of the OHG so roof protrudes evenly beyond the frame. Screw the roof panel to the OHG frame using self-drilling screws $\varnothing 6,3 \times 32$, screw the roof with upper front sheet using M6x25 screws.





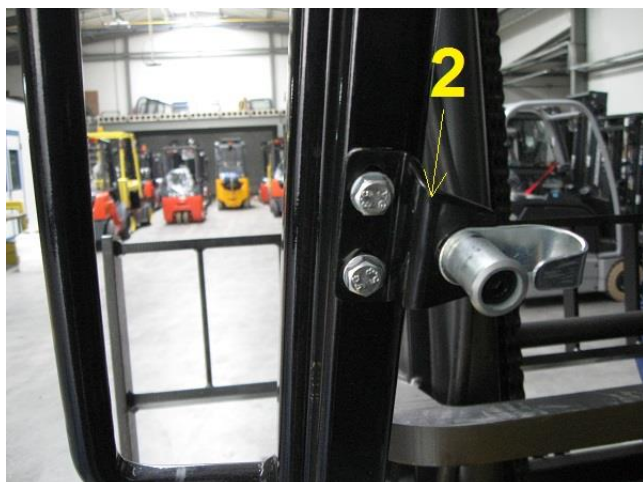
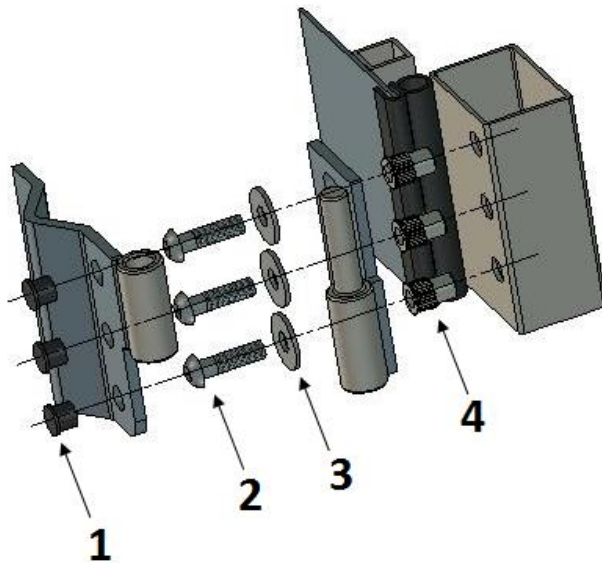
Doors

1. Put and set doors in such way that the gap between inner door cavity and the door/seal edge was equal.
2. Mark places for assembly holes for hinges.
3. Drill $\varnothing 11$ holes in marked places and embed M8 blind rivet nuts.
4. Screw hinges (1) to the OHG using M8x30 screws.



Complete assembly set for hinges:

- 1) – cover cap
- 2) – allen screw M8x30
- 3) – $\varnothing 8$ pad
- 4) – M8 blind rivet nut

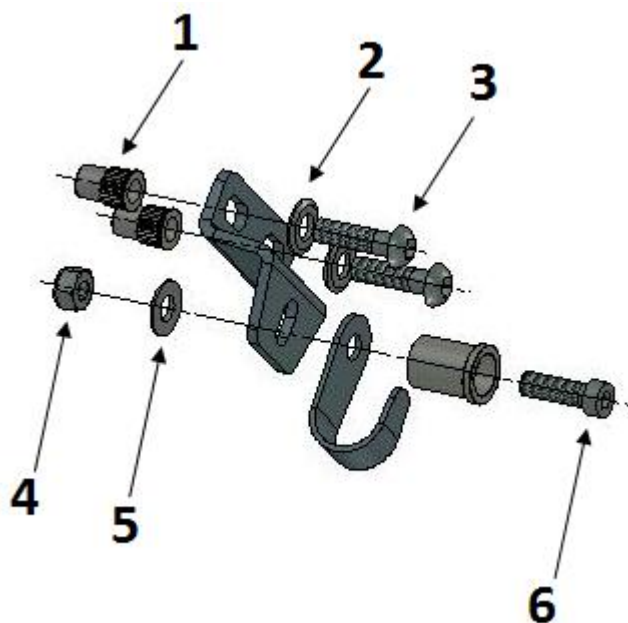


5. With the doors closed mark places for assembly holes for lock latch (2). Drill $\varnothing 11$ holes in that places and embed M8 blind rivet nuts. Screw the lock latch using M8x25 screws.



Complete assembly set for lock latch:

- 1) – blind rivet nut M8
- 2) – Ø8 pad
- 3) – allen screw M8x30
- 4) – self-locking nut M8
- 5) – Ø8 pad
- 6) – allen screw M8x30



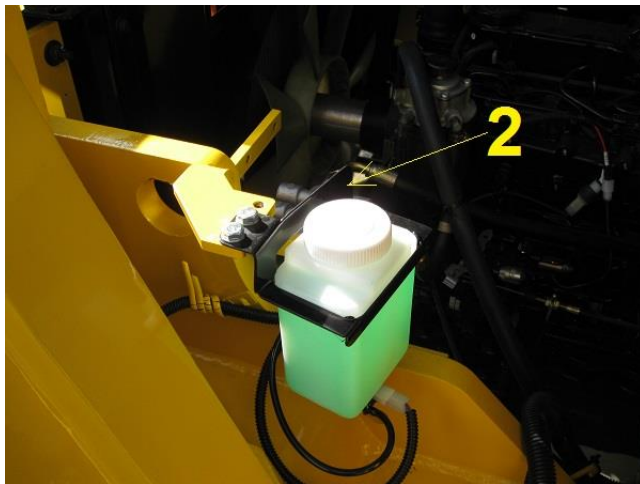
- 6. Attach gas spring to the door holder. On the other end of the spring put OHG holder (3).
- 7. Mark deadlock position of gas spring on OHG in such a way that when moving slightly the door, spring doesn't change the position on OHG. From this marked position move backwards by 7 cm.
- 8. Mark assembly holes on OHG. Drill Ø11 holes and put M8 rivetnuts.



Wipers



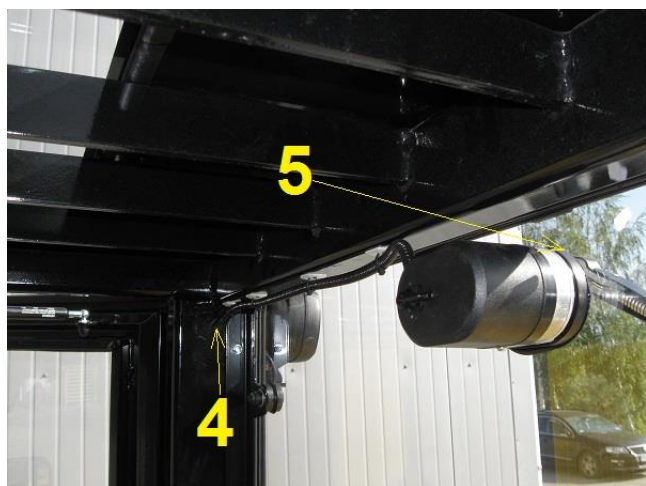
- (1).
 1. Drag the electric harness through the hole
 2. Connect electric harness to the wiper mechanism.
 3. Attach the wiper mechanism, arm and the blade.
 4. Drag the washer hose through the grommet (mounted in the front glass).



5. Assemble washer tank (2) in the engine compartment. Drag electric harness to the original fuse box.
 6. Connect wiper wires to the original fuse box to the wire, where „+” appears after ignition. Connect ground wire to the OHG frame.

7. Assemble wiper switch (3) in the cockpit.





8. Drill Ø 11 hole in the right rear OHG profile. Drag electric harness through the hole (4) to the original fuse box.

9. Glue the cushion/washer made of ertalon (5) using silicone to the rear glass/pane. Attach wiper mechanism, arm and the blade. Connect electric harness to the wiper mechanism.



Heater

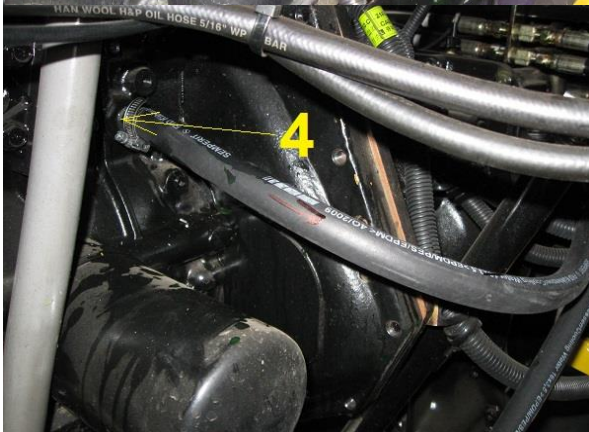


1. Put and set heater with connected holder (1) to the cockpit in such way that doors will not hit the holder (1). Mark places for assembly holes.

2. Drill Ø11 holes in these places and then embed M8 blind rivet nuts. Screw the heater using M8x25 screws.



3. Drill 2 holes Ø20 (2), for heater hoses and 1 hole Ø10 (3) for heater electric harness.



4. Remove end cup (4). Replace it with reduction. Attach heater inlet hose to reduction (4). Tighten using bands.

Remove end cup (5). Replace it with reduction. Attach heater outlet hose to reduction (5). Tighten using bands.