

Instructions for Linde 391 forklift truck body assembly

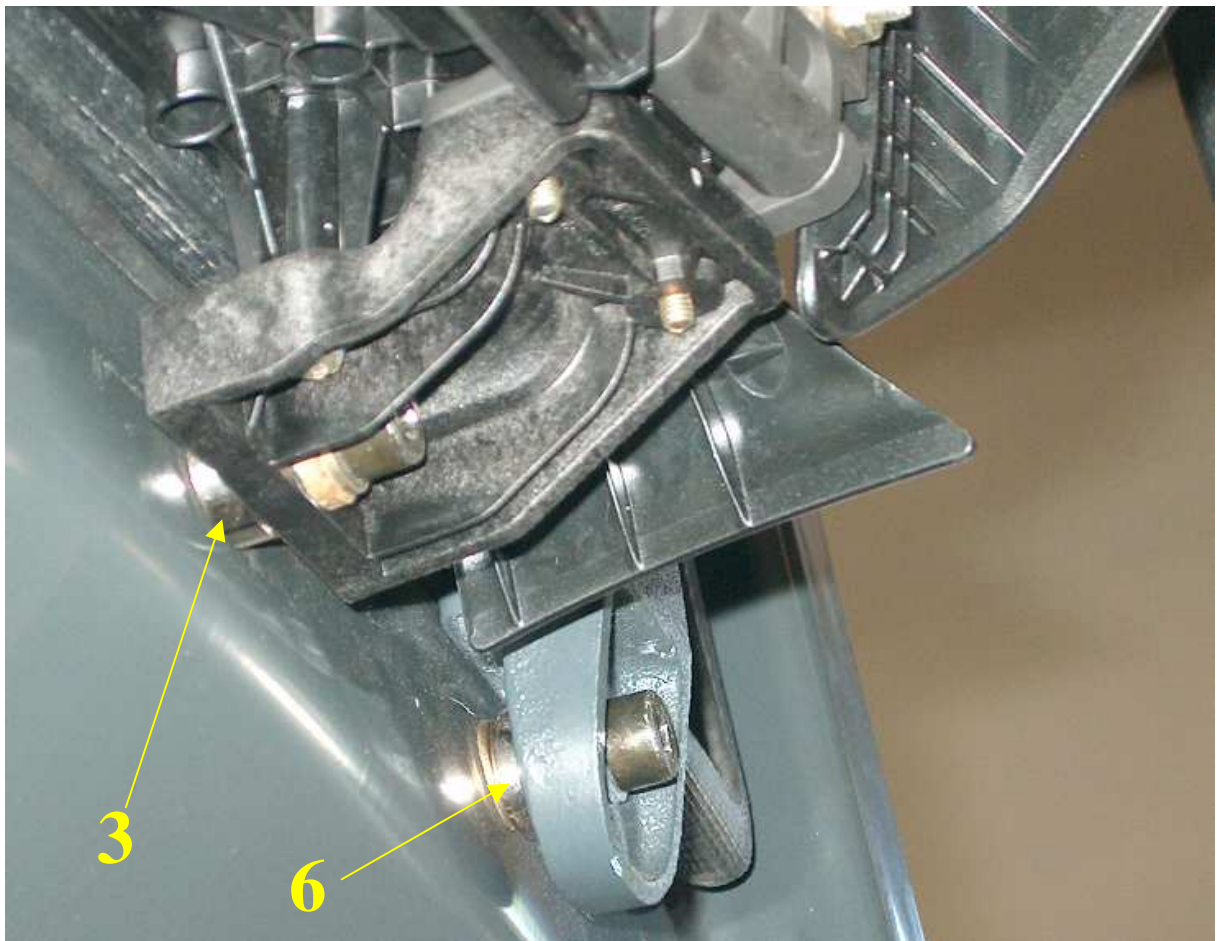
Roof

1. Put the roof window against the truck frame so that the window fixing overlaps with the roof frame and fasten with bolts M8x45 (1).

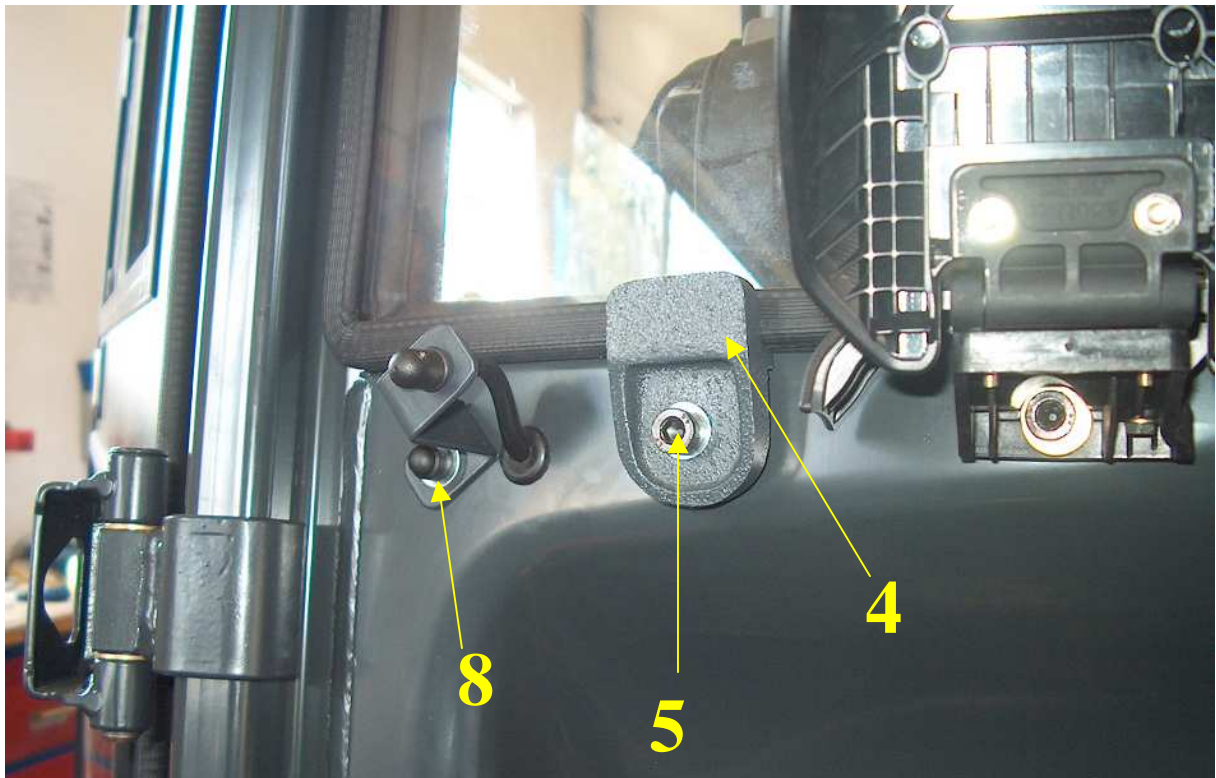


Rear

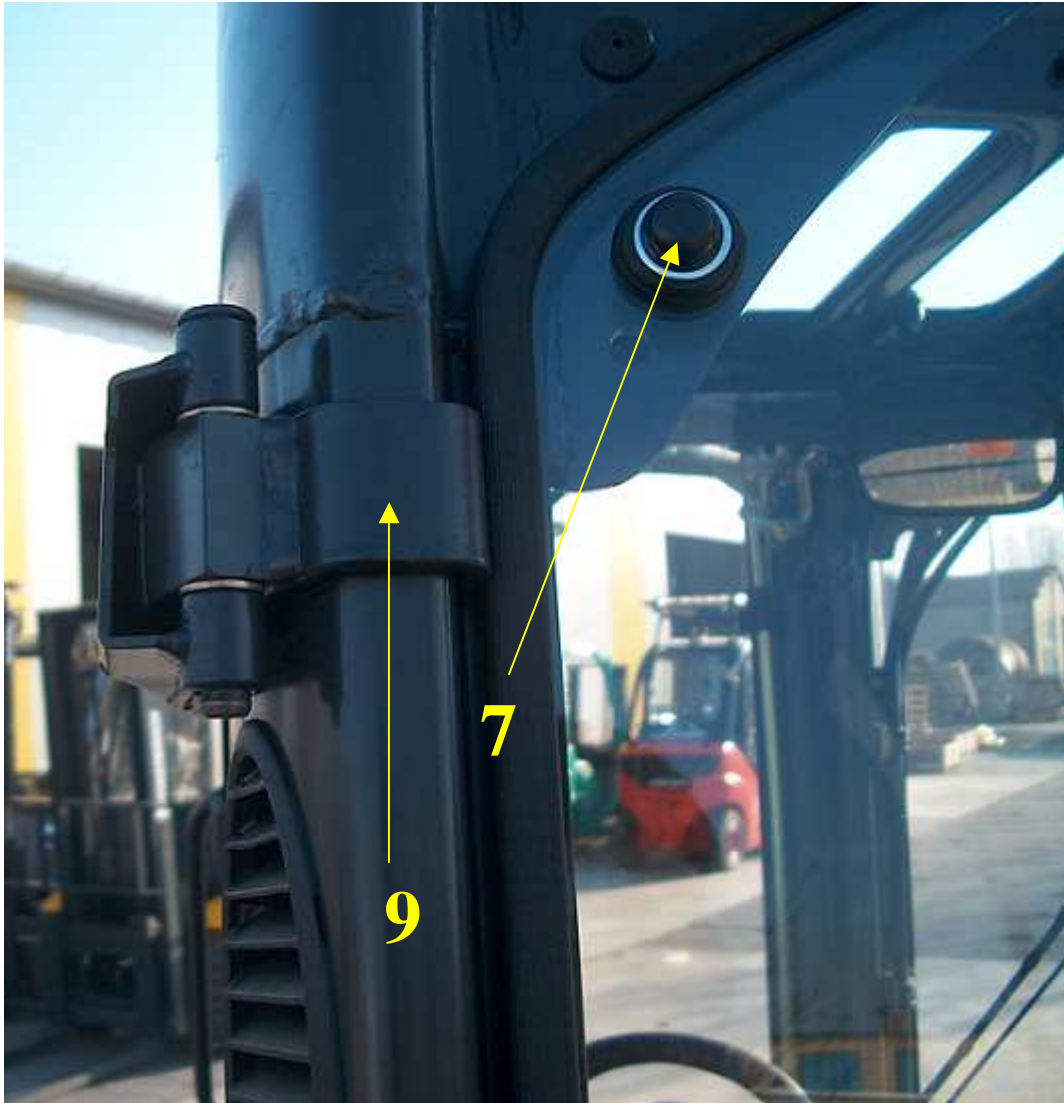
1. Unscrew the gas cylinder cover (2) and place $\text{Ø } 18 / \text{Ø } 9$ spacing sleeves (3) on the bolts.



2. Put M8 blind rivet nuts in the openings in the truck frame, slightly fasten the holders (4) which fix the rear window, using M8x35 bolts (5) together with 18/ Ø 9 spacing sleeves (6).



3. Rest the rear window on the fixing holders and fasten the window using M8x45 bolts (7).



4. Tighten the holders which fix the rear window with M8x35 bolts (5).

5. Drill Ø7 30mm hole below the rear window and screw the windscreen washer fixing with M6x15 bolt (8).

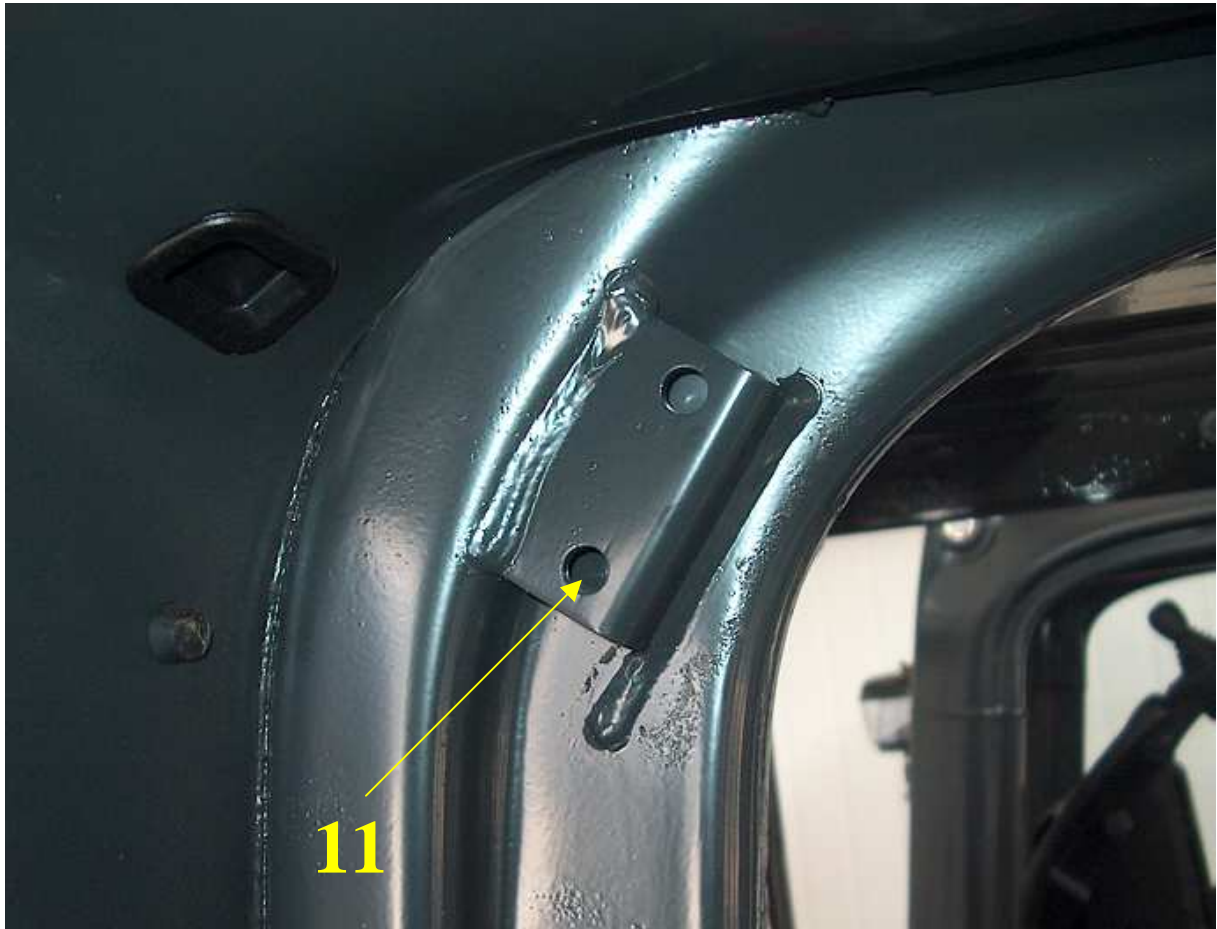
6. Drill Ø13 opening for the windscreen washer hose in the right part of the windscreen washer fixing.

Door

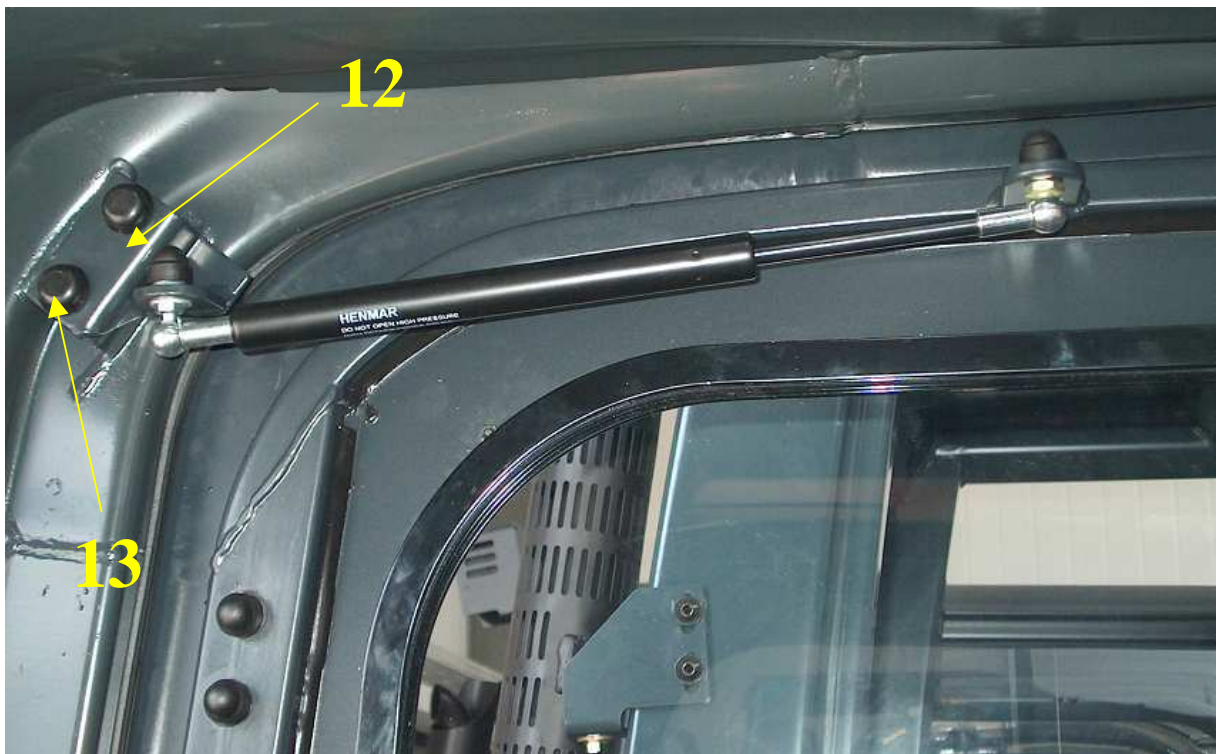
1. Put and position the door in such a way that the distance between the inner part of the truck frame recess and the door edge (sealing) is uniform along its length.
2. Put the clamping ring (9) on the truck frame and, using M8x40 bolt (10), fasten the door to the hinge.



3. Ream the $\varnothing 9$ openings (11) to obtain $\varnothing 11$ diameters, and place the M8 blind rivet nuts inside.



4. Attach the gas spring bracket (12) using M8x25 bolts (13) together with Ø18x Ø 8 spacing sleeves (14).





5. Mount the gas spring to the ball pins.

6. Press the door on the frame, compare the clamping ring with the lock striker and fasten using M8x50 bolt M8x50 (15).



Front

1. Place the M8 blind rivet nuts (16) in the openings in the truck frame.



2. Fasten the holders (17) fixing the windscreen by slightly screwing the M8x35 bolts (18).



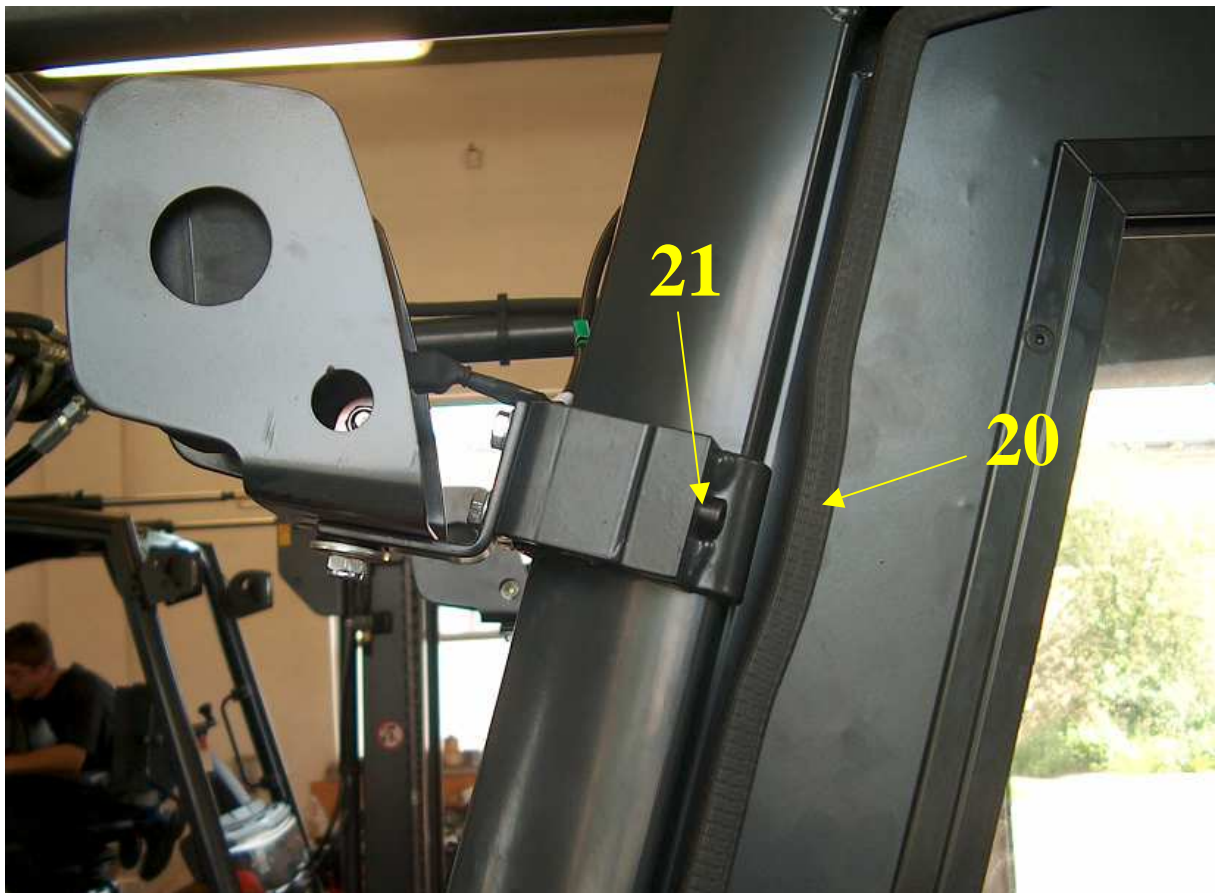
3. Rest the windscreen on the fixing holders and fasten it using M8x45 bolts (19).



4. Tighten the holders which fix the windscreen with M8x35 bolts (18).

Lights

1. Put clamping rings on the truck frame in the place of the door opening (20) and fasten them with M8x50 bolt (21).

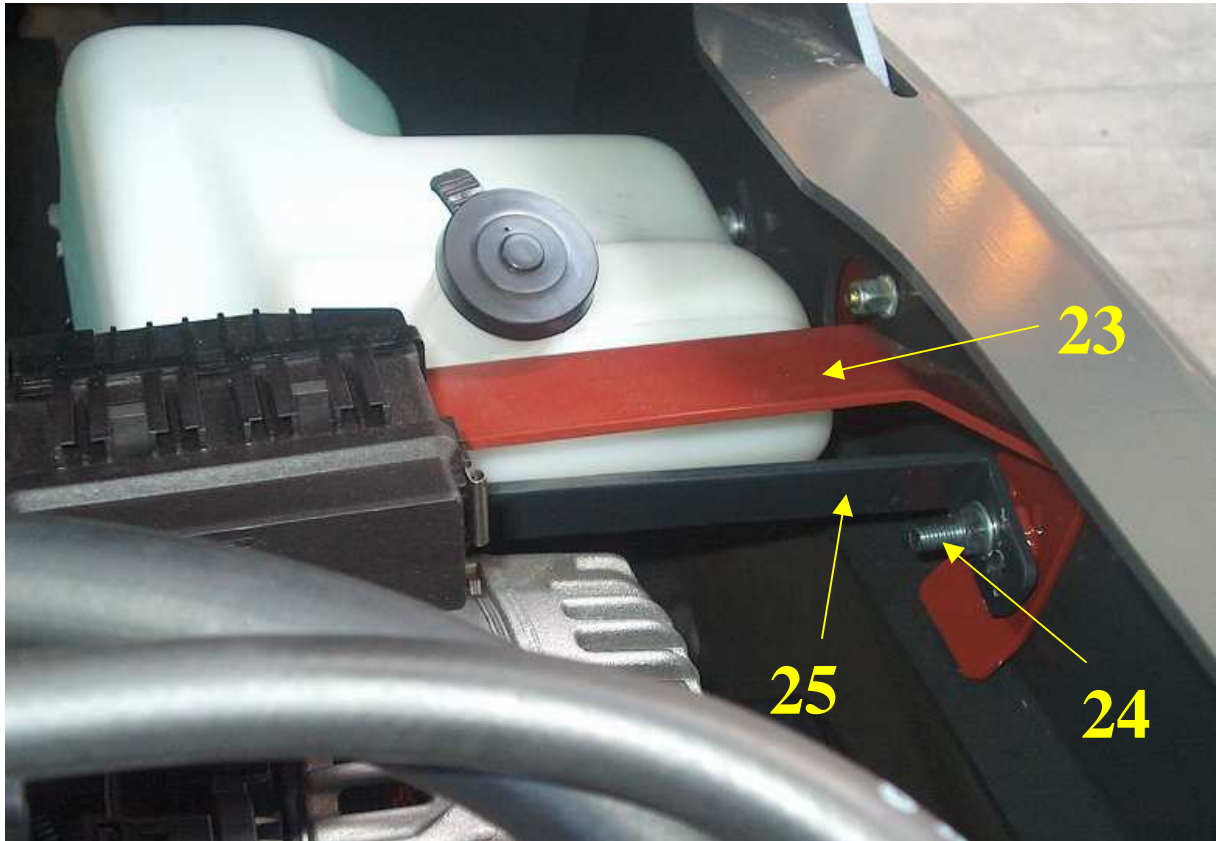


2. Put the halogen lamp fixture against the original opening in the truck frame and mark the point for the M8x15 bolt. Drill $\text{\O}9$ opening at the marked point.
3. Attach the halogen lamp fixture with M8x15 bolts (22).



Windscreen washer tank

1. Unscrew the holder (23). Using M8x40 bolt (24) reattach the holder together with the windscreen washer tank fixing (25).



2. Using the unscrewed bolt mentioned in item 1 above (26) fasten the windscreen washer tank fixing (27)



3. Connect the windscreen washer tank with the nozzle using hoses.