

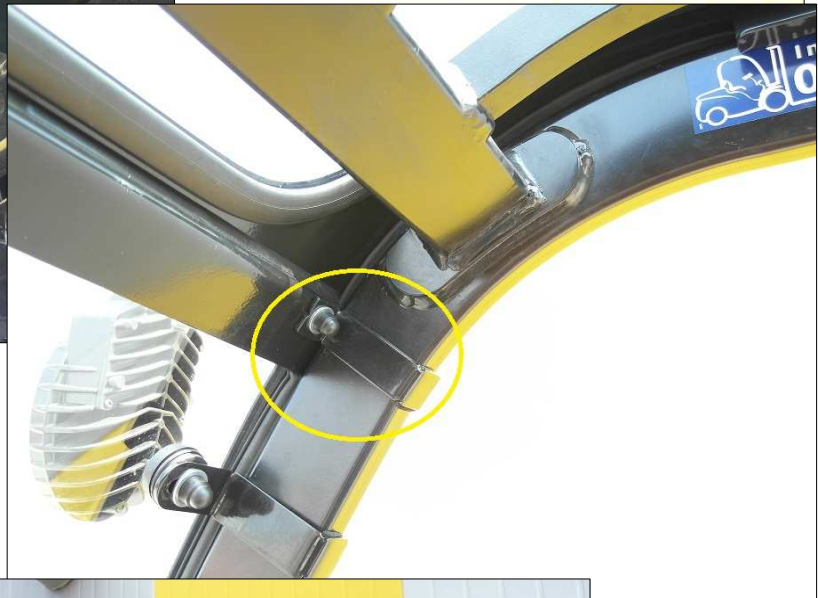
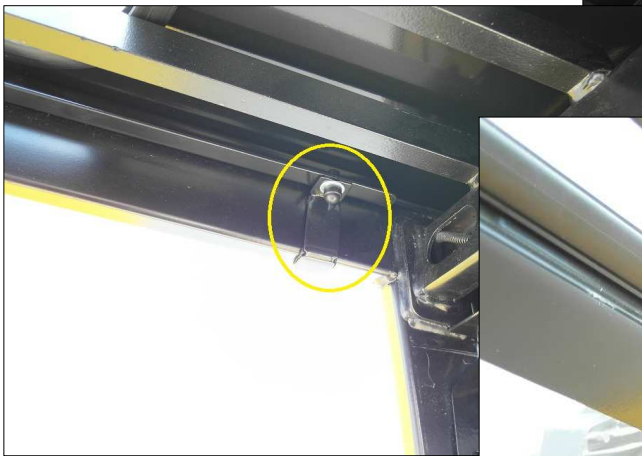
Instruction of assembly of cab for Mitsubishi Grendia 15 N / Caterpillar 15N2

ROOF

I. Disassemble rear lamps.

II. Put the roof metal plate to the OHG in such way so the plate fits to the roof hole steadily.

III. Fix the roof to the OHG using clamps (in the circles on the photos) and screws M6x20. Clamps fixing front part of roof are longer than others.



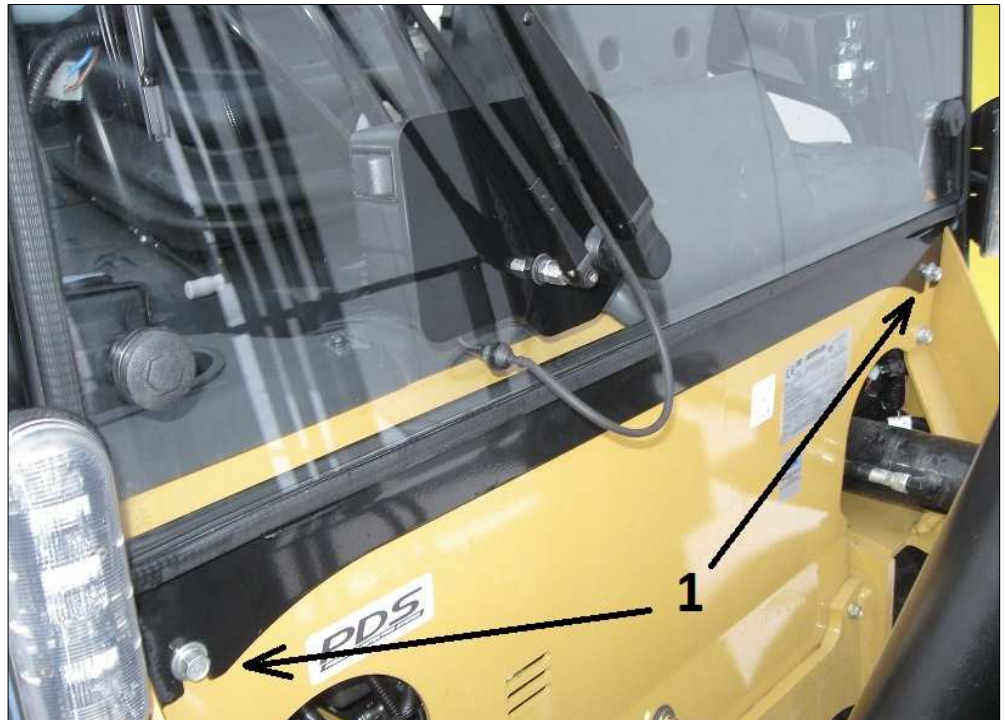
IV. Screw on rear lamps to the holders of roof



FRONT

I. Loose screws marked on the photo number 1.

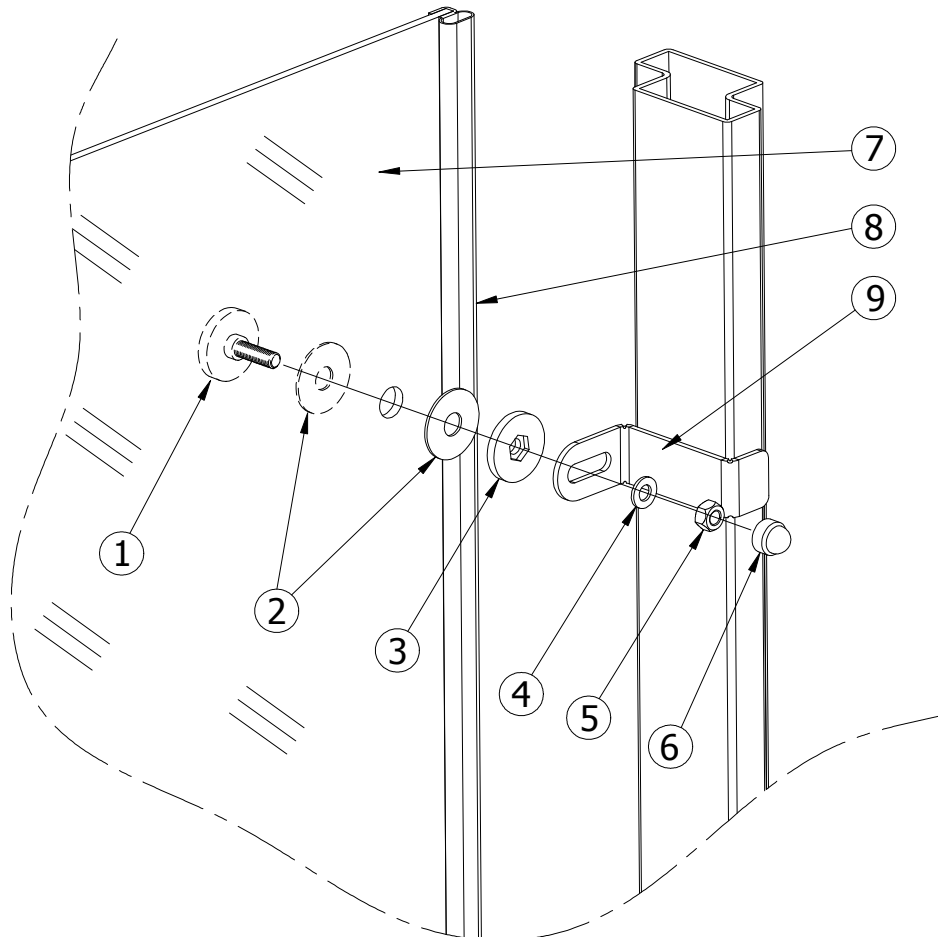
II. Slide the bottom metal plate under screws. Ends of plate should be based on front parts of OHG



III. Complete assembly kit of front glass according to drawing :

1. Screw M8x25.
2. Rubber washer.
3. Distance washer.
4. Washer fi 8.
5. Nut M8.
6. Protecting cup.
7. Front glass.
8. Seal.
9. Holder.

IV. Put the glass with completed components to front part of overhead guard – place it in niche of OHG. The upper edge of the glass has to touch the roof and bottom edge has to touch early installed metal plate. Screw strongly the glass to OHG.



Correctly fixed holder is shown on near photo.

Bottom edge of the front glass should be based on supports of bottom metal sheet :



REAR

- I. Unscrew handle with a horn signal.
- II. Place the frame in the back of the OHG. The upper part of the slide it to the previously installed roof. Set the frame so that the holes in the right side of the frame match the holes on the frame, which was bolted handle with signal reversing.



- III. Screw again the handle. Setting the frame can still be adjusted by sliding it slightly forward or backward so that the seat will not hit the glass and the frame does not extend too far behind the cart.

- IV. After carefully screw it into the frame using self-drilling screws.

- V. Place the bottom plate using the two knobs. A plate should be adjusted by moving it forward or backward so that the bottom part of metal plate adhere cooling system cover.



DOORS

I. Put the angle bar of door (look at bottom photo). Set the angle recess flush with the overhead guard. Mark places and fasten the angle bar using self-drilling screws.



II. Set blind river nuts M8 in the holes in the frame of the forklift.

III. Put and direct the door in such way so the hinges cover the holes in the forklift frame.

IV. Fasten hinges to the forklift frame using M8x30 screws with round head (allen wrench).



- V. Coapt the floor of the door so it should fit to the forklift frame steadily using 3 screws like is marked on the photo



- VI. Fasten the gas spring to the ball pin near the door frame. Put the holder onto the other end of gas spring (5)

- VII. Mark the „dead point” of the position of gas spring (stretched gas spring) so during the movement of the door the gas spring can not change its position on the forklift frame. Take the measure 7 cm (appr. distance) from the previous marked place to the rear part of the forklift.

- VIII. Put the holder of the gas spring marking places for assembly holes in the forklift frame. Drill holes $\varnothing 11$ in marked places and set blind rivet nuts M8.



- IX. Fasten the holder to the forklift frame using M8x20 screws.

- X. When door are closed mark places to assembly the pin of door latch (6) on the front part of the forklift frame. Drill holes $\varnothing 11$ in marked places and then set blind rivet nuts M8. Fasten the holder of pin of the lock to the frame using M8x35 screws (round head).

