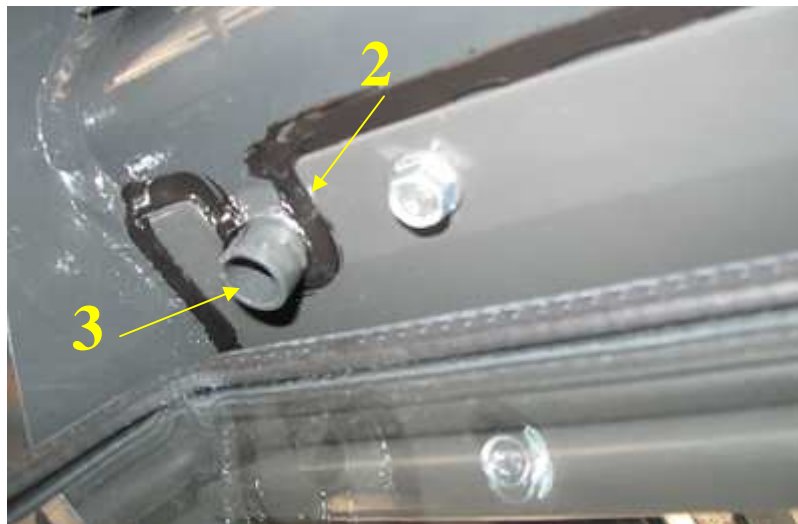


## Assembly instruction NISSAN GX CABIN

### FRONT PANEL

1. Put top front metal plate (1) against top part of OHG in such a way that the pipe placed in right part of OHG bar (3) fits into the plate hole (2).  
Attach the plate to OHG using  $\varnothing 6,3 \times 25$  self-drilling screws.



# K.B.O Sarl

---

2. Put front pillar bars (4) against inner part of front pillars in such a way that their top part adheres to outer part of front top plate (5), and lower part of bars adheres to front part of lower cross bar (6).



3. Attach the bars using  $\text{Ø}6,3 \times 25$  self-drilling screws.  
4. Attach front glass to the bars using M8x25 screws.

5. Tight the screen up all way round using silicon.

## REAR PANEL

1. Take off original screws from left and right part of OHG (1) and attach rear panel putting originals screws back.

In case of lower muffler or no holes in OHG, drill holes, put M8 rivetnuts and attach the panel using Mx25 screws.



2. Attach rear lower metal plate to rear panel using M6x20 screws.

# K.B.O Sarl

---



ROOF PANEL

1. Put roof panel on OHG and attach it using  $\text{Ø}6,3 \times 25$  self-drilling screws.



## DOOR

1. Put door against OHG and adjust it in such a way that distance between inner part of OHG and door edge (seal) equals all way round.
2. Mark hinge assembly holes (1).
3. Drill  $\varnothing 11$  holes and put M8 rivetnuts.
4. Attach hinges using M8x25 screws.

Left door

right door

# K.B.O Sarl

---



5. Attach gas spring to door pin. Attach OHG holder on the other end of the spring (2).
6. Mark deadlock position of gas spring on OHG in such a way that when moving slightly the door, spring doesn't change the position on OHG. From this marked position move spring holder backwards by 7 cm.
7. In this position mark assembly holes, drill  $\varnothing 11$  holes and put M8 rivetnuts.
8. Attach spring holder using M8x25 screws.

# K.B.O Sarl

---



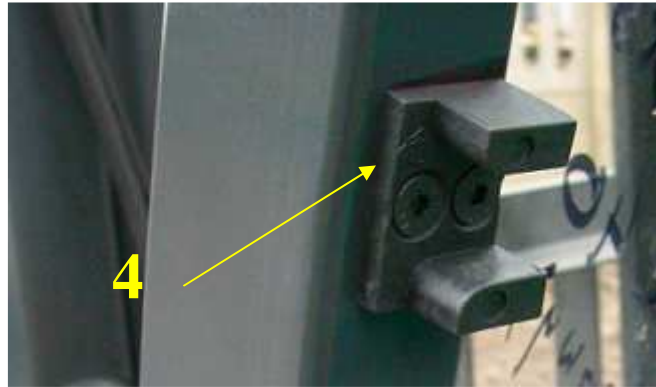
9. When door closed mark door lock pin holder assembly holes on front pillars (3). Drill  $\varnothing 11$  holes and put M8 rivetnuts. Attach holder using M8x25 screws.



10. Mark slide guide assembly holes (4). Drill  $\varnothing 9$  holes and put M6 rivetnuts. Attach the guide using M6x20 countersunk screws.

# K.B.O Sarl

---



11. Put rear door bars (5) against rear left and right part of motor bonnet in such a way that when door closed, door seal (6) adheres equally do the bars (5). Attach the bars using  $\text{Ø}6,3 \times 25$  selfdrilling screws.





# K.B.O Sarl

---

12. Put floor panel (7) to right and left part of truck frame in such a way that it stays at the same level as truck floor (8). Mark assembly holes on the frame, drill  $\text{\O}4,8$  holes and make M6 thread. Attach floor panels using M6x20 screws.



13. Adjust floor panel if needed (in case of hole between door and floor) (7)



14. Attach panorama mirror holder on the roof bar (9)
15. Attach mirror holder using M8x25 screws.

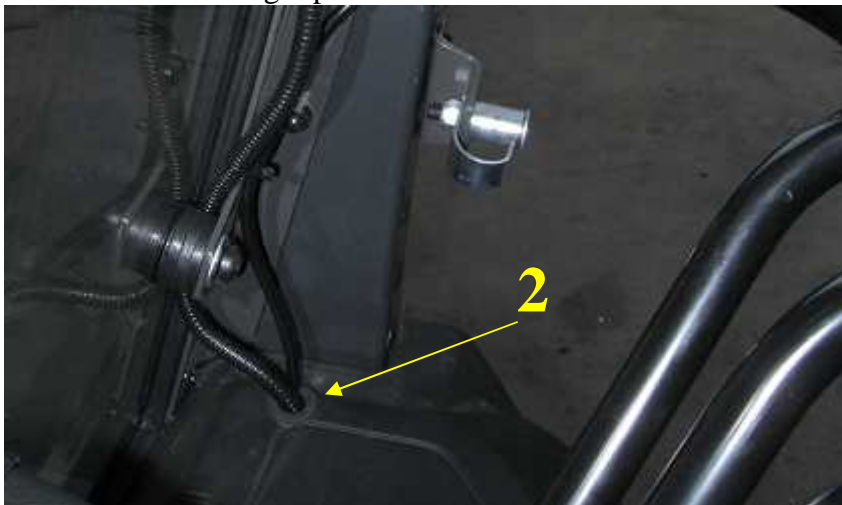


## Wipers

1. Drill Ø22 hole in front top part of dashboard (1) under wiper assembly holes of front glass and run the wiper harness through.
2. Attach wiper motor to the glass, then attach arm and blade.
3. Plug the harness into the motor.
4. Attach washer hose grommet in glass hole and attach washer hose.



5. Drill Ø 20 hole in right top part of dashboard (2). Run washer hose and harness through under dashboard towards front right pillar.



# K.B.O Sarl

---

6. Using selfdrilling screws attach washer tank holder on right front pillar in such a way that it's not hit by door lock when door shut (3).



7. Run washer hose and harness through the hole drilled before.

8. Run rear wiper harness through original hole in left rear pillar towards fuse box (4).



# K.B.O Sarl

---

9. Stick distance washer to rear glass (5). Attach rear wiper motor, arm and blade. Plug harness into the motor.



10. Take off fuse socket and solder switch power wires to black-yellow wire (5).



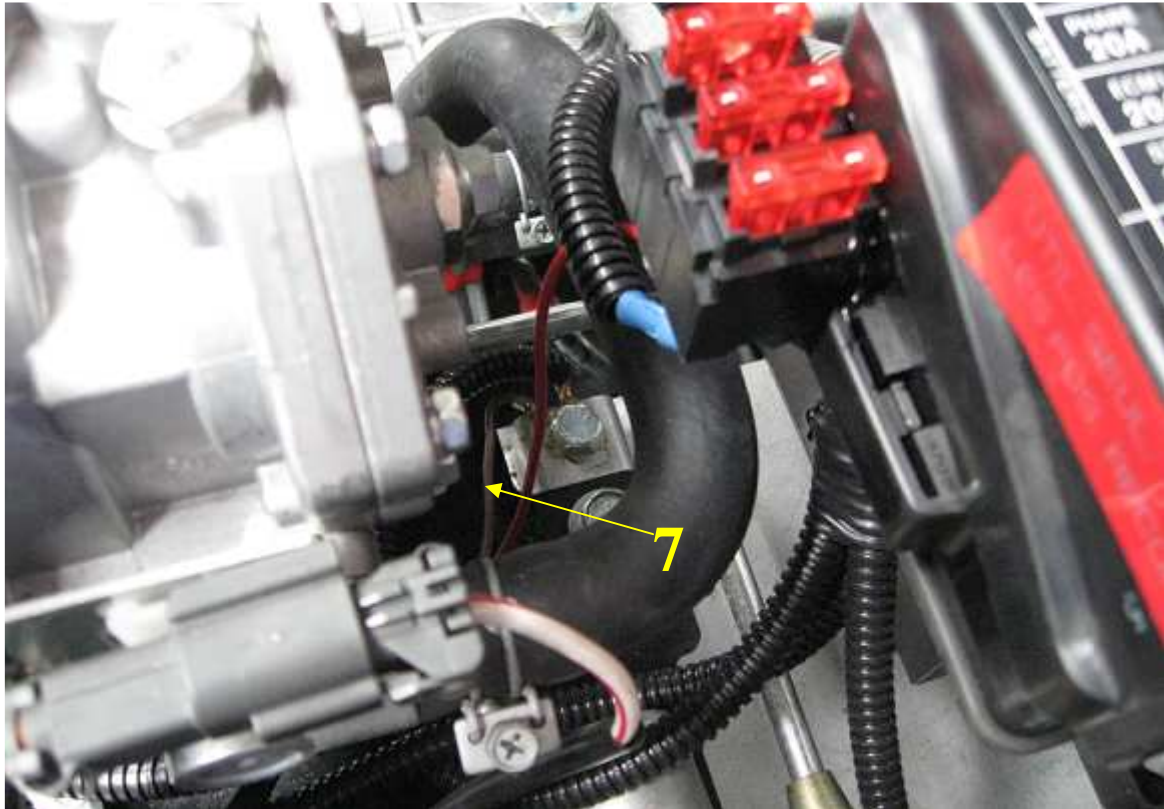
11. Stick back fuse box (6)



12. Attach ground wire to original screws under fuse box (7).

# K.B.O Sarl

---



12. Drill Ø13 holes on outer part of front pillars (8) and run halogen harness through. Then plug in halogen harness.

# K.B.O Sarl

---



13. Attach rear halogen holder to rear part of the roof using  $\text{Ø}6,3 \times 25$  selfdrilling screws (9).



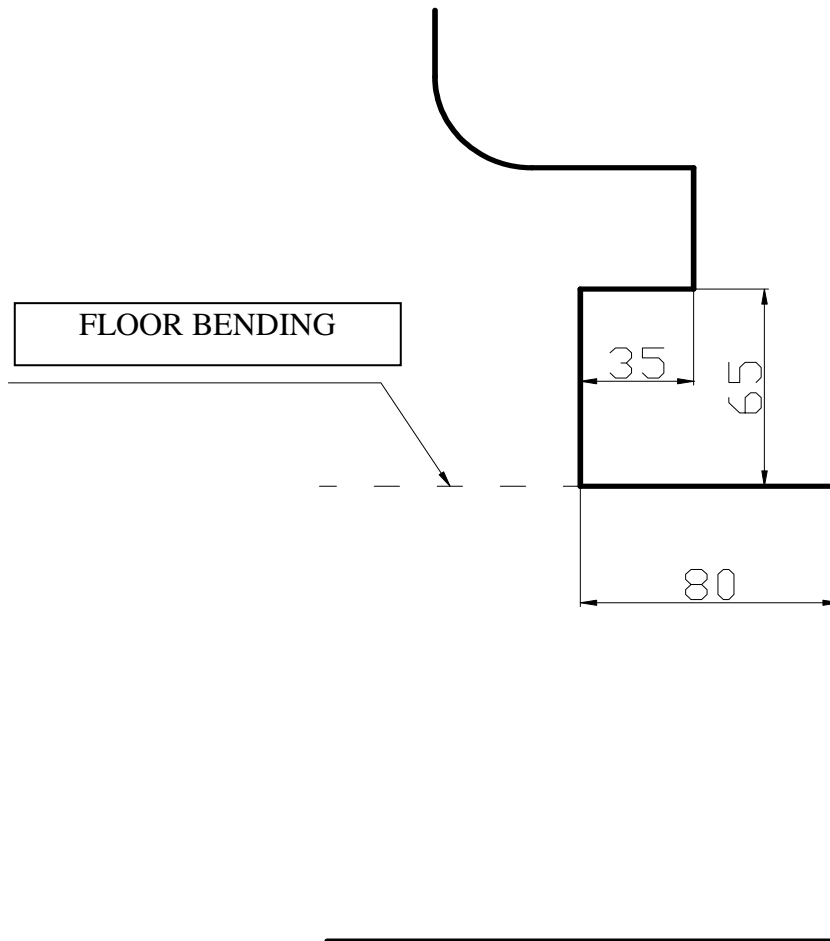
**HEATER**



# K.B.O Sarl

---

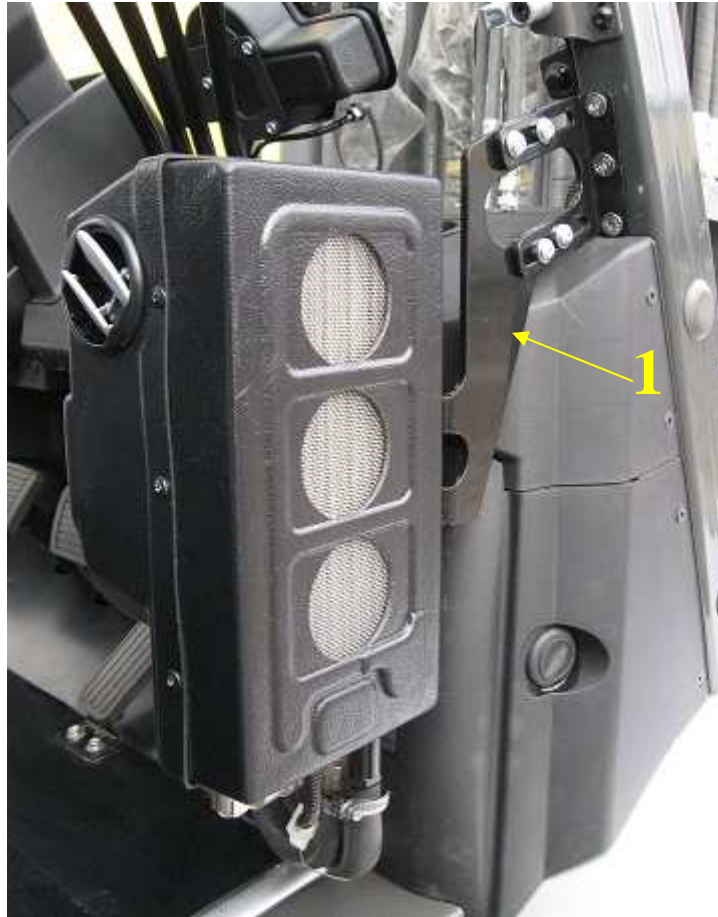
1. Take floor panel off and cut it as per below scheme.



# K.B.O Sarl

---

2. Put heater with holder against dashboard in such a way that when shutting the door, rear glass is not hitting heater holder. Then mark assembly holes on front right pillar.
3. Drill  $\text{Ø}11$  holes and put M8 rivetnuts. Attach the heater using M8x25 screws.



# K.B.O Sarl

---

4. Put seal on cut part of the floor (2).



5. Run heater hoses through the hole towards motor chamber.  
6. Put hoses on heater inlet/outlet and tight them up using clamps.

# K.B.O Sarl

---

7. Screw into the engine outlet pipe and attach heater inlet hose (3).
8. Cut engine hose into 2 parts (4) and connect it using T-pipe connector. Attach heater outlet hoses to the third T-pipe outlet (5)
9. Plug in heater harness.

